

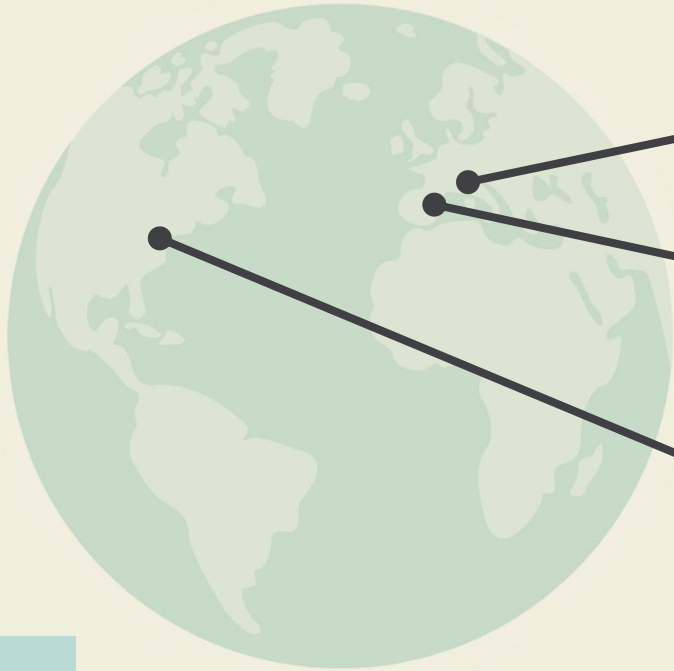
THE BLUEMAN GROUP



Archim, Clara, Emilia, Hari, Hrushi, Joel, Oriol



WHO WE ARE



Ferrara

Clara, Emilia

Barcelona

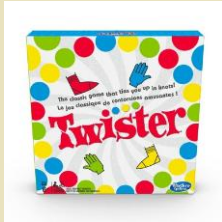
Joel, Oriol

Massachusetts

S
Archim, Hari, Hrushi



INITIAL IDEAS



Twister pad

Recreating twister with sound



Music Hall

Creating a soundscape inside a hallway



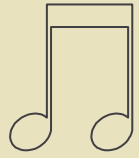
DDPR

Creating a viable instrument with a heads-up display



Music texts

Texting people with sound and music pop-ups



THE FINAL IDEA





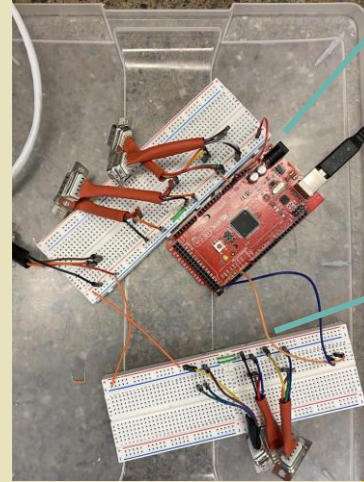
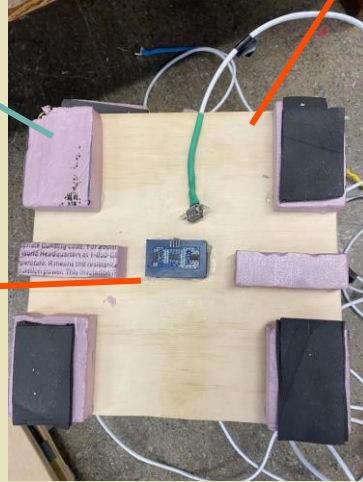
GETTING INTO DETAILS

Foam

Wood

Arduino Mega

Ultrasonic sensor



Cables





LET'S WORK ON IT!



BUILDING PROCESS



CHALLENGES



Problem

- Language barriers
- Measure conversions
- Making decisions all together
- Speaker didn't work



Solutions

- Multilingual team members translate, use of mobile phone
- Deal with it
- Divided work
- Used computer instead of speaker



NEXT STEPS

01

Sonic Pi

Kayli M. Requenez can easily code music

02

Looks

Painting, covering wires, etc.

03

Independance

Remove the computer from the system

04

Teaching HUD

Add a screen showing what notes are next in a song

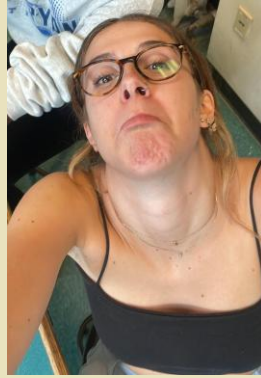
MENTORS



Huxley
(The best)



Vela



Ele



Danyelle



Charles

MENTORS

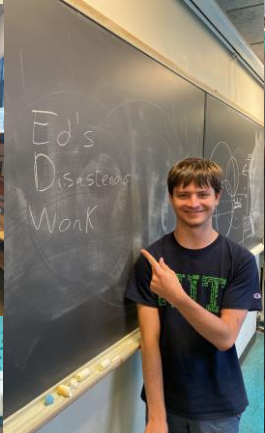


ED MORIARTY



CHRIS MAYER

FUNNY MOMENTS



THANKS FOR WATCHING!

